

APICS 2024

ASIA PACIFIC
INTENSIVE CARE
SYMPOSIUM
SICM X ANZICS

SINGAPORE

17 - 19 AUGUST 2024

SUNTEC SINGAPORE CONVENTION & EXHIBITION CENTRE



E-PROGRAMME BOOK

Organised by:

Managed by:



CONTENTS

Sponsor	3
Exhibitors	4
Acknowledgements	14
Welcome Message	15
Organising Societies	16
Organising Committee	17
General Information	18
Floorplan	20
Key Themes and Topics	21
Pre-Symposium Workshop	22
Opening Ceremony	25
Plenary Sessions	25
Meet-the-Expert	27
Programme	28
SHARE Sessions	34

SPONSOR

GOLD SPONSOR



PFIZER

At Pfizer, we apply science and our global resources to bring therapies to people that extend and significantly improve their lives. We strive to set the standard for quality, safety, and value in the discovery, development and manufacture of health care products, including innovative medicines and vaccines. Every day, Pfizer colleagues work across developed and emerging markets to advance wellness, prevention, treatments and cures that challenge the most feared diseases of our time.

Consistent with our responsibility as one of the world's premier innovative biopharmaceutical companies, we collaborate with healthcare providers, governments and local communities to support and expand access to reliable, affordable healthcare around the world. For more than 150 years, we have worked to make a difference for all who rely on us.

For more information, please visit us at www.Pfizer.com.sg and like us on Facebook at www.facebook.com/PfizerSG/

EXHIBITORS

Baxter BAXTER

Across the hospital, from the emergency room to the pharmacy, from the intensive care unit (ICU) to your inpatient's room, we are here to help you deliver the highest standard of care to your patients. We understand the challenges and complexities of modern healthcare that require an unwavering focus on patient outcomes, while ensuring every hospital function is safe, optimized and as cost-effective as possible. With a broad range of products and technologies for every step of the patient's journey, we are here to help you reach the ultimate goal: to speed recovery so your patients are home sooner.

For more information, please visit us at www.baxter.com/



BD

BD is one of the largest global medical technology companies in the world and is advancing the world of health by improving medical discovery, diagnostics and the delivery of care. The company develops innovative technology, services and solutions that help advance both clinical therapy for patients and clinical process for health care providers. BD has 77,000 employees and a presence in virtually every country around the world to address some of the most challenging global health issues. BD helps customers enhance outcomes, lower costs, increase efficiencies, improve safety and expand access to health care.

For more information, please visit us at www.bd.com/en-sea

Bittium BITTIUM

Bittium is a high-tech company specializing in medical technologies, tactical and secure communications, and engineering services.

We provide innovative medical technology products and services for biosignal measuring in cardiology, neurology, and home sleep apnea testing.

For more information, please visit us at www.bittium.com.

Deltex DELTEX

At Deltex Medical, our mission is clear: to combat haemodynamic instability in surgery and critical care.

As a global leader in haemodynamic monitoring, we take pride in our collaborations with anaesthetists and critical care specialists around the world. Our proven technology empowers clinicians to reduce preventable complications—such as acute kidney injury, acute respiratory distress syndrome, and surgical site infections—while effectively managing complex challenges including haemodynamic instability, sepsis, trauma, burns, and more. We are excited to introduce TrueVue™, our latest innovation. This state-of-the-art system features enhanced Oesophageal Doppler Monitoring (ODM) signal acquisition, intuitive software, HD touchscreen controls, and an integrated battery that enhances portability, enabling seamless patient monitoring across various clinical environments.

For more information, please visit us at www.deltexmedical.com

EXHIBITORS



DRAEGER

Draeger is an international leader in the fields of medical and safety technology. Draeger Singapore office consists of a team of trained professionals- customer service specialists, product specialists, and also service engineers to provide product applications, upgrades, repairs, and advanced technical support for our customers in Philippines.

With over 125 years of experience around the world, we design intelligent workplaces with integrated alarm systems using ergonomics, patient-centred workflows to promote the healing process. Our protective mechanical ventilation tools, in combination with our patient and respiratory monitoring solutions, help you better achieve your therapy goals. That's why we are "Your Specialist in Acute Care".

As your acute care specialist, we also aim to help you reduce the risk of nosocomial infections in your hospital, by providing guidelines on the correct preparation of medical devices and, in some cases, replacing reusable products with single-use products. This is what drives us: Improving Acute Care.

For more information, please visit us at www.draeger.com/en_sea/Hospital/Intensive-Care



Edwards

EDWARDS LIFESCIENCES

Edwards Lifesciences is a global leader in patient-focused medical innovations for structural heart disease, as well as critical care and surgical monitoring. Driven by a passion to help patients, the company collaborates with the world's leading clinicians and researchers to address unmet healthcare needs, working to improve patient outcomes and enhance lives.

Edwards has been advancing the care of the acutely ill for more than 40 years. Starting with the development of Swan-Ganz advanced hemodynamic monitoring devices for measuring cardiovascular performance in high-risk surgical and critically ill patients, Edwards continues to evolve to less-invasive and noninvasive devices to provide valuable hemodynamic insight for an expanded patient population. Edwards has continued to advance hemodynamic monitoring platforms to enable proactive clinical decisions for surgical, anesthesia and critical care clinicians. Edwards is focused on helping clinicians enhance knowledge and standardize practice to improve the quality and efficiency of care. Edwards provides evidence-based programs such as Enhanced Surgical Recovery Program that support the implementation and compliance to protocolized care pathways in the OR and ICU.

For more information, please visit us at www.edwards.com/sg.

EXHIBITORS



EO MEDICAL

EO Medical is thrilled to be part of APICS2024, showcasing our latest advancements in respiratory care technology. Come experience High Velocity Therapy from Vapotherm, see the newest Monnal T60A ventilator and practice your technique in intubating a massively bleeding airway with DuCanto large bore rigid suction catheter and the articulating Flexible tip Bougie!

Visit our booth C14 to explore and learn how our quality and innovative products can enhance your clinical practice. Connect with us to discuss your specific needs and challenges in respiratory and intensive care.

For more information, please visit us at www.eo.com.sg



EVEREST MEDICINES

Everest Medicines is a Hong Kong-listed biopharmaceutical company focused on licensing, developing and commercializing transformative pharmaceutical products that address critical unmet medical needs in Greater China and other emerging Asia Pacific markets. Since our inception in 2017, Everest Medicines has built a portfolio of eleven promising clinical-stage drug candidates across infectious disease, oncology, immunology and cardio-renal disease.

Singapore is the first market outside of US and EU which have approved Xerava™ (eravacycline) for the treatment of complicated intra-abdominal infections (cIAI) in adults. Xerava™ is a novel, fully-synthetic, broad-spectrum parenteral fluorocycline antibiotic of the tetracycline class. Global pivotal studies demonstrated that Xerava™ is non-inferior to two widely used comparators – ertapenem and meropenem and a well-tolerated profile. Xerava™ could strengthen HCP's armamentarium in the management of complicated infections including those due to drug resistant pathogens.

For more information, please visit us at www.everestmedicines.com.



FRESENIUS KABI

Fresenius Kabi is a global health care company that specializes in lifesaving medicines and technologies for infusion, transfusion and clinical nutrition. Our products and services are used to help care for critically and chronically ill patients.

Fresenius Kabi's product portfolio comprises a comprehensive range of I.V. generic drugs, infusion therapies, clinical nutrition products and medical devices for administering these products. Within transfusion technologies, Fresenius Kabi offers products for collection and processing of blood components and for therapeutic treatment of patient blood by apheresis systems.

With our corporate philosophy of "caring for life", we are committed to putting essential medicines and technologies in the hands of people who help patients and finding the best answers to the challenges they face.

For more information, please visit us at www.fresenius-kabi.com/sg/

EXHIBITORS



FRESENIUS MEDICAL CARE

As the world's leading provider of products and services for individuals with renal diseases, Fresenius Medical Care aims to continuously improve our patients' quality of life by offering them high-quality products as well as innovative technologies and treatment concepts. Our Critical Care division provides hospitals and ICUs with a comprehensive portfolio of technologies for the extracorporeal organ support of critically or otherwise severely ill patients, including acute blood purification, heart and lung support, and therapeutic apheresis.

For more information, please visit us at www.freseniusmedicalcare.com.

GRIFOLS GRIFOLS

Grifols is a leading global healthcare company. Our trusted and innovative plasma-derived medicines, other biopharmaceuticals and solutions in transfusion medicine enable millions of patients around the world to lead more productive lives.

Since our founding in 1909, our ever-growing mastery of plasma, diagnostics and life sciences, backed by our ethical leadership and industry-leading quality and safety standards, have contributed to a healthier and more sustainable society.

Grifols Asia Pacific Pte Ltd is excited to announce a significant development of Grifols SA became a majority shareholder of Biotest AG in 2023. Grifols Asia Pacific has now incorporated Biotest's commercial operations and is the sole distributor for Biotest products in Singapore. This development represents a substantial advancement in our regional operations and dedication.

For more information, please visit us at www.grifols.com



I:EMEDICS

I:Emedics Pte Ltd is a medical device distributor based in Singapore, established in 2005. With a focus on Anaesthesiology, ENT, Respiratory, and Wound Care products, we are committed to providing high-quality medical devices to the healthcare industry in Singapore.

Our mission is to make a difference in people's lives by providing innovative medical products that improve patient outcomes. We work with leading manufacturers worldwide to bring the latest medical technology to healthcare professionals in Singapore.

At I:Emedics, we pride ourselves on our commitment to customer service. We work closely with our customers to understand their needs and provide customized solutions that meet their unique requirements. Our team of experienced professionals is dedicated to providing exceptional service and support, from product training to technical assistance and after-sales service.

EXHIBITORS



IDSMED

The IDS Medical Systems Group (“idsMED Group”) is a leading integrated medical supply chain solutions company in Asia for almost a decade. It represents over 200 global medical brands in equipment and medical consumables, focusing on various specialty divisions including Intensive Care, Infection Control, Surgical Workplace, Diagnostic Imaging, Patient Support System, Cardiovascular, O&G and Peri-natal, among others.

As a member of Fung Investments, idsMED Group has offices in the six markets – Singapore, Malaysia, Indonesia, the Philippines, Thailand and Vietnam. It provides a comprehensive distribution and value-added service network to over 10,000 healthcare facilities, including government and private hospitals, day surgery centres, specialist and primary care clinics, laboratories and nursing homes.

With 1,800 employees, including 800 professionally qualified medical and sales personnel and over 300 skilled bio-medical engineers, idsMED offers a one-stop solution for marketing and sales, biomedical engineering services, clinical care, reliable product management and logistics services.

For more information, please visit us at www.idsmmed.com/



LÖWENSTEIN MEDICAL

The willingness to provide service, a pronounced customer proximity, and innovative strength in the development of new medical technologies are the decisive factors that have made Lowenstein Medical a leading medical technology company.

Lowenstein Medical is considered a pioneer and market leader for medical products in the hospital, homecare, and diagnostic sectors. Innovative technology, ergonomic design, and creative user interfaces characterize high-end systems and enable optimal support for the user in every situation. The success of “Made in Germany” products is based on excellent ideas, many years of experience, foresight, and innovation.

Since Reinhard Lowenstein joined the company in 1986, their core competence has been in the field of neonatology. Today’s core competencies were developed from our expertise and knowledge of neonatology.

In the Hospital division, Lowenstein Medical offers ventilation solutions specifically for newborns, anesthesia equipment, and intensive care ventilators for adults as well as children.

In addition, the Homecare division was developed, which equips patients with supplies who require medical aids in their home environment.

These aids are mainly used for the treatment of lung diseases or sleep-related respiratory disorders. The third and final division is Diagnostics, which aims to develop and market innovative products for the diagnosis of sleep-related breathing disorders.

Lowenstein Medical is there for you, from the initial diagnosis to hospitalization to surgery or, homecare. Our focus is on service – in all areas.

For more information, please visit us at www.loewensteinmedical.com

EXHIBITORS

MACROLUX MACROLUX

Macrolux is a company dedicated to endoscopic diagnosis and treatment, focused on providing innovative and reliable medical solutions to healthcare professionals around the world. We are focusing on the endoscopic intervention therapy market and prioritize the development of single-use endoscopes.

For more information, please visit us at www.microlite.cn

Medtronic

Engineering the extraordinary

MEDTRONIC

We lead global healthcare technology, boldly attacking the most challenging problems. Our Mission – to alleviate pain, restore health, and extend life – unites a global team of 90,000+ people, and our technologies transform the lives of two people every second, every hour, every day. Expect more from us. Medtronic. Engineering the extraordinary.

For more information, please visit us at www.medtronic.com



MSD

At MSD, known as Merck & Co., Inc., Rahway, NJ, USA in the United States and Canada, we are unified around our purpose: We use the power of leading-edge science to save and improve lives around the world. For more than 130 years, we have brought hope to humanity through the development of important medicines and vaccines. We aspire to be the premier research-intensive biopharmaceutical company in the world – and today, we are at the forefront of research to deliver innovative health solutions that advance the prevention and treatment of diseases in people and animals. We foster a diverse and inclusive global workforce and operate responsibly every day to enable a safe, sustainable and healthy future for all people and communities.

For more information, please visit us at www.msd.com

EXHIBITORS



Patient Care. Our Priority.

NESTLE HEALTH SCIENCE

Nestle Health Science empowers healthier lives through nutrition

As a global leader in the science of nutrition, we nourish those who need extra care, fill nutrition gaps and provide innovative products for healthier future, enabling patients to live their healthier lives. The right nutrition can be life-changing, and we have developed our nutrition portfolio around this belief.

We offer an extensive range of nutritional solutions including metabolic health, healthy ageing, gut health, critical care and oncology. The wide range of solutions we offer across the spectrum of life has one common denominator: science-based products that help people live their best lives. Through extensive research and development, working with healthcare providers and focusing on innovation, we are bringing the best options for individual needs and the latest advances in nutrition to the world. The best results can only come from the best science, and our dedication is unwavering.

You'll find our products in more than 140 countries, brought to you by a team of more than 12,000 employees worldwide dedicated to the power of nutrition. We make our products with sustainability in mind. In 2020, all our factories reduced their landfill waste to zero, and over the last decade we have made big reductions to our greenhouse gas emissions and water usage.

For more information about Nestle Health Science, please visit us at www.nestlehealthscience.sg/

For more information about Compat, please visit us at www.compat.com/



NIHON KOHDEN

Nihon Kohden is Japan leading manufacturer, developer, and distributor of medical electronic equipment, providing solutions in emergency care, testing and diagnosis in the healthcare sector around the world. Working by the side of its customers, with them in mind, Nihon Kohden's products promote efficiency, high quality, reliability, and accessibility of healthcare.

Nihon Kohden is headquartered in Tokyo, Japan, and has more than 70 years of experience around the world; it has sales subsidiaries in the U.S., Europe, Middle East, and Asia Pacific. Our products are now used in more than 120 countries and continuing to contribute to mankind by fighting disease and improving health with advanced technology.

For more information, please visit us at www.nihonkohden.com

EXHIBITORS



PALL MEDICAL

Pall Medical (Cytiva) is the expert of Medical Filtration and membrane solutions serving healthcare professionals, medical device manufacturers, and patients.

Our portfolios include,

Hospital Healthcare Water POU filters: Filters for removing waterborne pathogens (including Legionella and Pseudomonas spp.) from healthcare, public, and residential water distribution systems.

IV & drug delivery filters: Filtration devices to remove unwanted particles and elements from intravenous infusions.

Breathing filters: High efficiency gas filters designed to maintain the health and safety of patients and clinical staff.

OEM filtration membranes and devices: Innovative membrane technology, reliable manufacturing, and the regulatory compliance needed for medical manufacturers.

For more information, please take the NEW Pall Medical Virtual Hospital Tour at www.filtration-tour.app.cytiva.com

PHILIPS PHILIPS

Philips is a health technology company focused on improving people's lives through meaningful innovation – from healthy living and prevention to diagnosis, treatment and home care. Applying advanced technologies and deep clinical and consumer insights, Philips partners with customers to deliver integrated solutions that help provide improved patient experience, better health outcomes, improved staff experience, and lower cost of care.

For more information, please visit us at www.philips.com.sg/healthcare/medical-specialties/acute-care-capabilities

EXHIBITORS

SANDOZ SANDOZ

Sandoz is the leading global provider of off-patent medicines. These generic and biosimilar medicines are more affordable than reference medicines. With a comprehensive portfolio of ~1,500 products covering most major therapeutic areas and available in 100+ countries, we make a real difference for patients and healthcare systems worldwide. We provide more than 800 million patient treatments per year, generating more than USD 18 billion in direct savings in the US and Europe alone, improving healthcare by freeing up resources and resulting in a total social impact estimated at around USD 400 billion per year worldwide.

In addition to leadership in driving access to high quality, cutting-edge medicines, we have an impressive history of medical innovation, including some truly transformative treatments. Today, we're continuing to build on that deep scientific heritage with a strong pipeline of important off-patent medicines ranging from complex generics to biosimilars and beyond. Our purpose of pioneering access for patients drives everything we do, from ensuring the sustainability of critical antibiotics to democratizing access to powerful biologic medicines.

For more information, please visit us at www.sandoz.com



SCANMED

Scanmed Technology (S) Pte Ltd was formed with a vision to create a strong presence of medical equipment, consumables & disposables distribution in Singapore.

Established back in 1993, Scanmed Technology provides a range of medical equipment, supplies and services, cater to various health institutions including hospitals, clinics, nursing homes, polyclinics, medical schools and health sciences authority. Key specialty products include ultrasound, bladder scanner, patient warmer, vascular doppler, CTG, digital radiography, computed tomography (CT), resting ECG, cardiac stress testing, holter monitoring, vascular treatment devices, synthetic cadavers for education purposes and more.

We aim to be the choice provider of quality, affordable and value products & services.

For more information, please visit us at www.scanmed.com.sg



SOCIETY OF CRITICAL CARE MEDICINE

The Society of Critical Care Medicine (SCCM) is the largest nonprofit medical organization dedicated to promoting excellence and consistency in the practice of critical care.

With members in more than 100 countries, SCCM is the only organization that represents all professional components of the critical care team. The Society offers a variety of activities that ensure excellence in patient care, education, research, and advocacy.

SCCM's mission is to secure the highest-quality care for all critically ill and injured patients.

For more information, please visit us at www.sccm.org.

EXHIBITORS

Somnotec
Bridging Health with Technology

SOMNOTEK

Hamilton Medical is committed to helping medical teams deliver the best respiratory care – to anyone, anywhere. With Intelligent Ventilation technologies that are safe, easy to use, and lung protective, we strive to lessen the load for the frontline heroes of critical care.

The extensive range of ventilators are being exclusively distributed by Somnotec (S) Pte Ltd in Singapore.

For more information, please visit us at www.somnotec.net

VUNO[®]

VUNO

Established in 2014, VUNO is a global leader in medical AI development, pioneering cutting-edge deep learning solutions for proactive healthcare. VUNO aims to harness AI's potential to improve lives through early disease detection and prevention, by utilizing diverse medical data, including bio-signals, imaging, and digital pathology.

One of VUNO's medical AI solutions, VUNO Med-DeepCARSTM, is a deep-learning based early warning system used to monitor and assess the risk of cardiac arrest among inpatients in general ward. The patterns and relationships between 4 vital signs – blood pressure, heart rate, body temperature, respiratory rate – are analyzed to provide patient's cardiac arrest risk score within the next 24 hours, allowing timely interventions and close monitoring of patients and ensuring prompt actions are taken when necessary to improve patient safety and clinical outcome.

For more information, please visit us at www.vuno.co

ACKNOWLEDGEMENTS

We wish to thank the following supporting organisations and societies, whose support has made this symposium possible:

Gold Sponsor



Exhibitors

Baxter



Bittium

Deltex

Dräger



GRIFOLS



LÖWENSTEIN
medical

Medtronic
Engineering the extraordinary



MACROLUX

NIHON KOHDEN



PHILIPS

SANDOZ



Society of
Critical Care Medicine
The Intensive Care Professionals

Somnotec
Bridging Health with Technology

VUNO

Organised By



Managed By





WELCOME MESSAGE

Warm greetings from us at APICS!

2023 was an exciting year for us at Society of Intensive Care Medicine (SICM) and ANZICS, with yet another successful APICS 2023 marking our 10th edition.

Emerging well from the covid-19 pandemic, we introduced the inaugural APICS Asia Pacific Societies Summit, APICS Abstracts Spotlight and distributed 26 travel awards to delegates in LMIC countries. This was made possible by generous contributions from some of our speakers. We had 15 Asia Pacific Critical Care Societies Leads and Representatives to discuss the challenges and opportunities for collaboration within the region. We also saw the first-ever APICS Simulation Challenge for an immersive and experiential learning experience.

Our theme for 2024 is “Best Care Beyond Borders” where we focus on harnessing the latest scientific developments to benefit critical ill patients at an individual level in different ICUs and countries. One size does not fit all, so our approaches need to be adaptable and catered to every unit and country’s resources. We look forward to continued collaborations within the region and are ever committed to improve accessibility of critical care knowledge to benefit all.

In 2024, our scientific programme will expand again to 2 days of pre-conference workshops, followed by 3 days of the main conference. As with previous APICS, we will continue to feature a comprehensive range of workshops, close interactions at our APICS Abstract Spotlight Sessions and interactive discussions between delegates and renowned speakers at symposiums, and close engagements with our trade sponsors for the latest technologies. APICS 2024 promises to provide ample learning opportunities for all levels. From medical students, trainees, nurses, pharmacists and allied health to doctors, we have designed an exciting programme that meets your learning needs. Yet again, we will expand our programme to encompass a comprehensive range which includes Obstetrics, Rapid Response Systems, Artificial Intelligence in the Intensive Care Unit, and a full Paediatrics track for the main conference.

You will be thrilled to experience Singapore, a vibrant city state featuring iconic landmarks, a melting pot of cultures and food delicacies, safe environments, welcoming communities, and a comprehensive public transportation system for travelers.

For updates through 2024, you may wish to follow us on our social media on Facebook (APICS – Asia Pacific Intensive Care Symposium), Instagram (apics_official), X (@ApicsOfficial).

Looking forward to welcoming you in Singapore in August 2024!

Yours Sincerely

A handwritten signature in black ink, appearing to read 'Sean Loh'.

Sean Loh
APICS 2024 Convenor

A handwritten signature in black ink, appearing to read 'Emily See'.

Emily See
ANZICS Co-Convenor

ORGANISING SOCIETIES



AUSTRALIAN AND NEW ZEALAND INTENSIVE CARE SOCIETY (ANZICS)

The Australian and New Zealand Intensive Care Society was formed in 1975 and is the premier representative body for specialists practicing intensive care medicine in Australia and New Zealand. The society has over 770 members spread across the two countries and internationally.

Despite its relatively small size, ANZICS has developed a high international profile through the activities of the Clinical Trials Group and the adult and paediatric outcomes databases (CORE). ANZICS committees are also responsible for studying safety and quality in intensive care practice and the development of clinical practice guidelines and for the management of the organ donor process in intensive care units. ANZICS plays an important role in advocacy for intensive care specialists with government bodies. ANZICS is an active member of the Asia-Pacific Association for Critical Care Medicine and the World Federation of Societies for Intensive and Critical Care Medicine.

For more information, please visit us at www.anzics.org



SOCIETY OF INTENSIVE CARE MEDICINE, SINGAPORE

The Society of Intensive Care Medicine is the representative body for intensive care medicine professionals in Singapore. Its objectives are to advance the knowledge and practice of intensive care medicine in Singapore. It strives to achieve this by improving and providing education in intensive care medicine and by encouraging and supporting research activities in this area.

The Society played a key role in the development of the next generation of intensivists via the setting up of a national multi-disciplinary intensive care medicine training programme, in conjunction with the Ministry of health. The Society is also active in organizing courses related to intensive care, such as the SICM SymPosium (SISPO), the Fundamental Critical Care Support Course, and other continuing medical education (CME) meetings, culminating in the annual SG-ANZICS Intensive Care Forum.

For more information, please visit us at <https://sicm.org.sg/>



ORGANISING COMMITTEE

APICS 2024 Convenor	Asst Prof. Sean Loh Changi General Hospital	
ANZICS Co-Convenor	Dr. Emily See Royal Melbourne Hospital	
Scientific Chair	Dr. Roshni Gokhale Changi General Hospital	
Scientific Co-Chair	Dr. Andrew Cheng Bankstown-Lidcombe Hospital, UNSW & UWS	
Scientific Programme	Dr. Lau Yie Hui Tan Tock Seng Hospital	Dr. Andrew Li Woodlands Health
	Dr. Ruth Chen Woodlands Health	Dr. Chew Mei Fang Tan Tock Seng Hospital
Paediatrics	Dr. Cheryl Lin KK Women and Children's Hospital	Dr. Ben Gelbart Royal Children's Hospital Melbourne
	Dr. Beatrice Ng National University Hospital	
Workshops	Dr. Sandra Hui Changi General Hospital	Dr. George Zhou The Alfred Hospital, Melbourne
	Dr. Ng Kangqi Changi General Hospital	Dr. Kerina Denny Gold Coast University Hospital
	Dr. Nicole Sieow Changi General Hospital	Dr. Cheryl Tan Changi General Hospital
	Dr Carys Loyd Jones Western Health & Austin Health	
Experience Team	Dr. Pearly Koh Changi General Hospital	Dr. Cheryl Ho Singhealth
	Dr. Tay Sok Boon Sengkang Hospital	Dr. Ravi Cuttilan Tan Tock Seng Hospital
	Dr. Tan Joo Hor Tan Tock Seng Hospital	Dr. Ye Madong Khoo Teck Puat Hospital
	Dr. Seth Ting Ng Teng Fong Hospital	
Advisors	Dr. David Ku Board Member (co-opt) and Director of International Relations, Australia and New Zealand Intensive Care Society (ANZICS) Council Member, Asia-Pacific, World Federation of Intensive and Critical Care (WFICC)	Dr. Lie Sui An (APICS Convenor 2023) Singapore General Hospital A/Prof. Chia Yew Woon (SICM President) Tan Tock Seng Hospital
	Dr. Christian Karcher (APICS Convenor 2023) The Royal Melbourne Hospital The University of Melbourne	Dr. Jacqueline Ong National University Hospital



GENERAL INFORMATION

At APICS 2024, we strive to strike a balance between maintaining the strictest hygiene practices while being mindful of our impact on the environment. Our aim is to ensure a safe and comfortable symposium experience for everyone.

We will not be providing a printed symposium booklet and will minimise printed materials. The full symposium programme can be found on our website and the platform app.

Conference Venue

Suntec Singapore Convention & Exhibition Centre
 1 Raffles Blvd, Singapore 039593

Information on how to get to Suntec Singapore can be found [here](#).

Registration, Delegate Badge, and Lanyard Collection

For pre-symposium workshop attendees, kindly proceed to the respective Level 3 workshop rooms located at **Suntec Singapore Convention & Convention Centre, Level 3, from 15–16 August 2024, Thursday–Friday**.

For main symposium pre-registered delegates, kindly proceed to collect your badge from the registration counters/self-kiosk located at **Suntec Singapore Convention & Convention Centre, Level 4, Hall 404, from 17–19 August 2024, Saturday – Monday**. Do note that you will be required to bring along your QR code for fuss-free badge collection.

Badge Collection Timings:

DATE	TIME
15 Aug 2024 (Level 3)	0800 – 1730hrs
16 Aug 2024 (Level 3)	0800 – 1730hrs
17 Aug 2024 (Level 4)	0730 – 1730hrs
18 Aug 2024 (Level 4)	0830 – 1730hrs
19 Aug 2024 (Level 4)	0730 – 1430hrs

It is mandatory that attendees wear their badges at all times at the conference venue.

Language

The official language of the Conference is English. No translation will be provided.

Event App

Our on-demand event app will be live on 17 August 2024, Saturday, you may head over here and login with your registered email. Do ensure to whitelist noreply@swapcard.com to receive the login details for your account. Session recordings of APICS 2024 will be available on the app 2 weeks after event. You may wish to click on the respective icons below to download the app to your mobile.



You may now start scheduling meetings with the APICS 2024 community and bookmarking sessions by our sponsors, exhibitors, and partners happening throughout the event. Visit www.sg-apics.com/ to find out all the details of our latest agenda and speakers.



GENERAL INFORMATION

Internet Access

Complimentary WIFI is available within the Conference venue. It is designed for web browsing and checking web-based email and not designed for accessing VPN or downloading of large files.

Coffee and Tea Breaks

Coffee and tea breaks are served daily. Please refer to the Programme for the time of each break.

ePoster Presentations

ePosters will be presented at the ePoster panels located in Exhibition Hall 405EX on Level 4 throughout the Symposium.

Liability and Insurance

The Symposium Organisers and Secretariat cannot accept liability for personal accidents or loss of or damage to private property of participant and accompanying persons. Participants are advised to take up their own travel and health insurance for their trip.

Symposium Secretariat

For Post-Symposium enquiries and information, please contact the Symposium Secretariat at info@sg-apics.com.

FLOORPLAN



Exhibitor	Booth No.	Exhibitor	Booth No.
Baxter	C3	MacroLux Medical Technology	A0
BD	B18	Medtronic	B2
Bittium Biosignals Ltd	B15	MSD Pharma (Singapore) Pte Ltd	A3
Deltex Fluid Monitoring	B17	Nestle Singapore Pte Ltd	B9
Draeger Singapore Pte Ltd	C11	Nihon Kohden Singapore Pte Ltd	B12
Edwards Lifesciences	A1	Pall Medical (Cytiva)	C1
EO Medical Pte Ltd	C13	Pfizer Private Limited	B4
Everest Medicines (S) Pte Ltd	B3	Philips Electronics Singapore Pte Ltd	B6
Fresenius Kabi (S) Pte Ltd	C7	Sandoz Singapore Pte Ltd	B8
Fresenius Medical Care Singapore Pte Ltd	B10	Scanmed Technology (S) Pte Ltd	D3
Grifols Asia Pacific Pte Ltd	B16	Society of Critical Care Medicine (SCCM)	A2
I:Emedics Pte Ltd	C2	Somnotec (S) Pte Ltd	D4
IDS Medical Systems (Singapore) Pte Ltd	C9	Vantive Pte Ltd	D1
Löwenstein Medical Technology	B1	Vuno Inc.	B14

KEY THEMES AND TOPICS

1. Art in Critical Care (Drawings/Paintings/Poems/Music)
2. Artificial Intelligence, Information Technology, Medical Informatics in Critical Care
3. Airway Management in Critical Care
4. Cardiac Arrest, Therapeutic Temperature Management, Post Cardiac Arrest Care
5. Cardiology, Hemodynamics and Heart-Lung Interactions in Critical Care
6. COVID-19, Infectious Disease, Sepsis
7. Critical Care in LMIC and Limited Resource Environments
8. Critical Care Nephrology
9. Critical Care Organisation
10. Early Warning and Rapid Response Systems
11. Education, Simulation and Wellbeing in Critical Care
12. Ethics in the ICU
13. Extracorporeal Life Support including ECMO and ECCOR
14. Family Communications and Team Interactions in Critical Care
15. Gastroenterology and Nutrition in Critical Care
16. Geriatrics and Frailty in Critical Care
17. Green Initiatives in the ICU
18. Haematology and Oncology in Critical Care
19. Hepatology (Liver) in the ICU
20. Mobilisation and Rehabilitation, Physical Therapy/Occupational Therapy, Post Intensive Care Syndrome
21. Neurocritical Care
22. Nursing in Critical Care
23. Obstetrics in Critical Care
24. Organ Transplantation
25. Paediatric Critical Care
26. Pain, Agitation, Delirium, Immobility, Sleep including Sedation Management
27. Palliative Care in Critical Care
28. Perioperative Medicine in Critical Care
29. Pharmacy in Critical Care
30. Quality Improvement in the ICU
31. Respiratory Critical Care, Acute Respiratory Distress Syndrome and Mechanical Ventilation
32. Speech Therapy in Critical Care
33. Tracheostomy and Chronic Respiratory Failure
34. Trauma, Mass Casualty and Burns

PRE-SYMPOSIUM WORKSHOPS

APICS ECMO COURSE



Date 15 – 16 August 2024, Thursday - Friday

Time 0800 – 1730hrs

Venue MD6 Sim Lab, National University Hospital, Singapore

A bus has been arranged to transport ECMO workshop participants from Suntec City Conference Venue to NUS. The return trip to Suntec City Conference venue would be around 1700-1730hrs.

Introduction

The highly acclaimed ECMO course at the MD6 lab is currently one of the few courses endorsed by the Extracorporeal Life Support Organisation (ELSO) in Asia. It develops skills for doctors, nurses, perfusionists, and respiratory therapists in the management of patients on ECMO and teaches how to troubleshoot common problems with a simulated learning experience. The didactic talks are a prelude to comprehensive water drills and virtual reality sessions that cover the A to Z of the circuit and its components, plus common issues faced during day-to-day management of ECMO patients.

Learning is further enhanced by smaller group simulation sessions to allow for hands-on education and active instructions on both basic and advanced topics such as circuit checks, equipment components, alarms, pressure monitoring, and emergency trouble-shooting procedures. Faculty and simulation educators will facilitate discussions on team training, clinical critical thinking, and decision making. Participants who attend the course will be assessed before and after the course and will receive ELSO endorsed Course certificate as well as the Red Book.

Synopsis

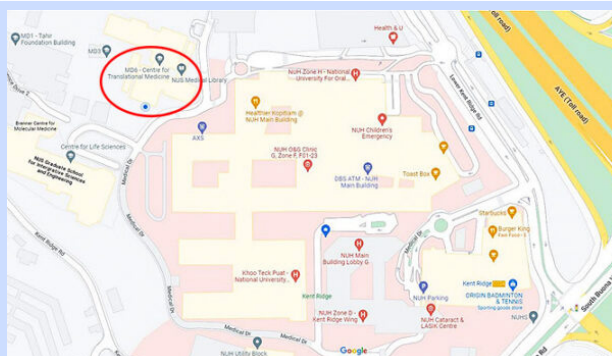
VV ECMO: principles, practice, problems & troubleshooting
 VA ECMO: principles, practice, problems & troubleshooting
 Virtual Reality Sessions
 ECMO circuit problems & hands-on troubleshooting
 Principles of ECMO cannulation
 Basic and Advanced ECMO high fidelity simulation & scenario

Target Participants Doctors, nurses, perfusionists and respiratory therapists involved in the care of ECMO patients

Lead Faculty (Local) Dr. Ramanathan K
 Dr. Graeme Maclaren

Faculty Mr. Si Guim Goh
 Ms. Pauline Oh

Location





CHRONIC VENTILATION WORKSHOP



Date	15 August 2024, Thursday			
Time	0900 – 1800hrs			
Venue	Suntec Singapore Convention & Exhibition Centre, Level 3, Room 335 – 336			
Introduction	This full – day workshop will highlight the differences between acute and chronic ventilation, the transdisciplinary coordination required to manage each unique ventilator – assisted individual, differences in practice between various international groups, ventilator weaning in specific conditions, adjunct therapies, and sleep – disordered breathing in chronic ventilation users.			
Objectives	<p>The Chronic Ventilation Workshop, through a combination of didactic and practical sessions, aims to:</p> <ul style="list-style-type: none"> • Explain the differences between acute and chronic ventilation, and multidisciplinary coordination of roles in managing a patient transitioning to chronic ventilation • Elaborate on how to assess suitability for ventilator rehabilitation at the Ventilator Rehabilitation Unit (VRU), Tan Tock Seng Hospital, with nursing input • Demonstrate proper early tracheostomy care, secretion clearance techniques, adjunct therapies such as cough assist, and communication techniques such as leak speech and augmentative and alternative communication (AAC) • Discuss differences in practice of chronic ventilation in various countries (UK, Canada and Singapore) learnt from fellowship attachments • Discuss ventilator weaning and decannulation in specific conditions including spinal cord injury (SCI), Guillain – Barre syndrome, and Critical Illness myopathy • Explain sleep – disordered breathing in chronic ventilation users • Run through difficult conversations in progressive neuromuscular diseases such as Amyotrophic Lateral Sclerosis (ALS) and Advance Care Planning (ACP) 			
Target Participants	All doctors, nurses, and allied health therapists with a keen interest to get an in – depth look at initiation, management, and discharge planning of individuals requiring Chronic Ventilation.			
Lead Faculty (Local)	Dr. Valerie Ng and Dr. Debra Seow			
Faculty	Dr. Genevieve Tan Dr. Chai Hui Zhong	Dr. Wee Jiayan Dr. Lim Jiayan	Dr. Ravi Cuttilan Dr. Chan Yeow	Melinda Lim (ST) Cheryl Tan (PT)
	Speakers Mr. Gacula Levi Mr. Lo Tun-Yi			



CRITICAL CARE POCUS WORKSHOP



Date	16 August 2024, Friday	
Time	1300 – 1700hrs	
Venue	Suntec Singapore Convention & Exhibition Centre, Level 3, Room 331	
Synopsis	The aim of the course is to introduce novices to diagnostic point-of-care ultrasound of the lungs and for lower limb deep vein thrombosis (DVT). The content closely follows the FUSIC program and serves as a starting point for those interested in embarking on the training program.	
Topics	<ul style="list-style-type: none"> • Lung ultrasound • Lower limb deep vein thrombosis 	
Programme	13:00 - 13:15	Introduction to POCUS, basic knobology
	13:15 - 13:45	Lung ultrasound lecture
	13:45 - 14:45	Hands on (3 stations, round robin style) <ul style="list-style-type: none"> 1. Diagnostic lung US on healthy volunteers (20min) 2. Case discussion of lung US pathology (20min) 3. Ultrasound guided pleural catheter insertion (20min)
	14:45 - 15:00	Tea break
	15:00 - 15:30	DVT ultrasound lecture
	15:30 - 16:30	Hands on
	16:30 - 17:00	Q+A, Introduction to FUSIC
Faculty	<p>Singapore Dr. LAU Yie Hui, Senior Consultant, AICPM, TTSH Dr. XU Hui Ying, Senior Consultant, RCCM, TTSH Dr. Nicolas LIM Yao-Han, Consultant, Emergency Medicine, WH Dr. TAN Joo Hor, Associate Consultant, Cardiology, TTSH Dr. CHEW Si Yuan, Consultant, Respiratory & Critical Care Medicine, SGH Dr. CHOO Wee-Sen, Consultant, Intensive Care Medicine, NTFGH Dr. TAN Rou An, Consultant, Intensive Care Medicine, NTFGH</p> <p>United States of America Prof Aarti SARWAL, Wake Forest University School of Medicine</p>	

**Programme is updated as of 9 August 2024.



OPENING CEREMONY

17 AUGUST 2024, ESPLANADE HALL 406CX

Time	Programme
0920hrs	The arrival of Dr Janil Puthuchearu (GOH) Senior Minister of State, Ministry of Digital Development and Information, & Ministry of Health
0930hrs	Start of Opening Ceremony
0935hrs	Emcee to announce the arrival of GOH
0935 – 0940hrs	Opening Address by A/Prof Chia Yew Woon, President of the Society of Intensive Care Medicine (SICM), Singapore
0940 – 0945hrs	Welcome Address by A/Prof Mark Nicholls, President/PAW Chair of ANZICS
0945 – 0955hrs	Speech by Guest-of-Honour, Dr Janil Puthuchearu (Senior Minister of State, Ministry of Communications and Information & Ministry of Health)
1000 – 1010hrs	Performance by Voice of the Cello
1010 – 1020hrs	Entourage & GOH for an Exhibition tour
1030 – 1040hrs	Escort GOH to Speaker Lounge for networking & opening ceremony refreshment

***Programme is updated as of 9 August 2024.*

PLENARY SESSIONS

17 AUGUST 2024, ESPLANADE HALL 406CX

Time	Session and Speaker
0800 – 0830hrs	Plenary 1: Origin, Emergence & Evolution of COVID-19 Prof. Edward Holmes
0830 – 0900hrs	Plenary 2: ARDS Respiratory Support Strategies Prof. Laurent Brochard
1115 – 1145hrs	Plenary 3: Future ICU: Patient Design for Optimal Recover Dr. Lauren Source
1645 – 1715hrs	Plenary 4: Health Economics in Critical Care Research Dr. Lisa Higgins
1715 – 1745hrs	Plenary 5: Invasive vs Non-Invasive Assessment of Cardiogenic Shock: Can Less Be More? Prof. Carlos Alviar

***Programme is updated as of 9 August 2024.*



PLENARY SESSIONS

18 AUGUST 2024, ESPLANADE HALL 406CX

Time	Session and Speaker
1700 – 1730hrs	Plenary 6: The Year in Review – The Year’s Critical Care Literature in 30 Minutes A/Prof. Jason Phua

***Programme is updated as of 9 August 2024.*

19 AUGUST 2024, ESPLANADE HALL 406CX

Time	Session and Speaker
0800 – 0830hrs	Plenary 7: Seasonal and Pandemic Influenza: What is the Threat Posed By Avian H5? Prof. Edward Holmes
0830 – 0900hrs	Plenary 8: From Controlled Hypothermia to Temperature Control: How Has Our Practice Changed? Prof. Markus Skrifvas
1320 – 1350hrs	Plenary 9: Landmark Trials in Paediatric Critical Care A/Prof. Peta Alexander
1350 – 1420hrs	Plenary 10: 30 Years of Critical Care Research Prof. John Myburgh
1420 – 1450hrs	Plenary 11: The Future of Critical Care Prof. Jan De Waele

***Programme is updated as of 9 August 2024.*



MEET-THE-EXPERT

18 AUGUST 2024, SUNDAY



Title Treatment & Diagnosis in the Anti-Microbial Resistance Era: Pneumonia

Date 18 August 2024

Time 14:45 – 15:30hrs

Synopsis Multidrug-resistant (MDR) Gram-negative bacterial (GNB) infections continue to pose a serious threat to critically ill patients in intensive care units (ICU). This event will explore and address the challenges faced in the management of MDR GNB infections in the ICU, covering pertinent topics such as novel treatment approaches, decision-making, and rapid diagnostics.

- Objectives**
- Explore the current epidemiology of carbapenem-resistant Enterobacterales (CRE)
 - Discuss the diagnosis and current treatment options of extended-spectrum beta-lactamases (ESBLs)
 - Explore and address the challenges encountered in the ICU in the management of MDR GNB infections, including:
 - o Considerations for balancing national and local guidelines/protocols
 - o The ICU Dr’s role in the Antimicrobial Stewardship Program (ASP) team
 - o The role of rapid diagnostics in the optimization of treatment strategies for MDR GNB infections in the ICU

Schedule	14:45 – 14:50hrs	Opening	Dr Kenneth Chan
	14:50 – 15:10hrs	Treatment & Diagnosis in the AMR Era: Pneumonia	Prof Christian Sandrock
	15:10 – 15:20hrs	Patient Case Study: Challenging MDRO Cases	Prof Christian Sandrock
	15:20 – 15:30hrs	Q&A Summary & Closing	Dr Kenneth Chan Prof Christian Sandrock

Faculty



Dr Kenneth Chan, Singapore

Dr Kenneth Chan is a specialist in respiratory medicine at the Respiratory Medical Associates in Singapore. His special interests include bronchoscopy, smoking cessation, and intensive care medicine. He is also a visiting consultant to Singapore General Hospital and an Adjunct Assistant Professor at the Duke-NUS Graduate Medical School. Dr Chan received his MBBS and MMed in Internal Medicine from the National University of Singapore. He is a member of the Royal College of Physicians, UK, a Fellow of the Academy of Medicine, Singapore, and a Fellow of the American College of Chest Physicians.



Dr Christian Sandrock, United States

Dr Christian Sandrock is the Director of Critical Care, Vice-Chair for Quality and Safety, and Professor of Medicine at UC Davis Medical Center, USA.

Professor Sandrock has an M.P.H. in international public health, an M.D. degree from Lund University, and is Board Certified in Critical Care Medicine, Infectious Diseases, as well as Pulmonary Disease by the American Board of Medicine. His clinical interests lie in respiratory infections, community-acquired and viral pneumonia, and ICU-acquired infections. His research interests include emerging infectious diseases at the animal and human interface, particularly respiratory infections such as avian influenza, SARS, and other diseases acquired by humans, and he has published more than 50 peer-reviewed publications on the topic.

Professor Sandrock believes in a patient-driven and centered approach that focuses on holistic care, including family support, alternative therapies, religion, lifestyle practices, cultural practices and other modalities in conjunction with conventional therapies.

PROGRAMME

17 AUGUST 2024, SATURDAY (DAY 1)

TIME	HALL 406CX, ESPLANADE HALL			
0800 - 0830	Plenary Session 1 Session Chair: Dr. Andrew Cheng			
	Origin, Emergence & Evolution of COVID-19 Prof. Edward Holmes			
0830 - 0900	Plenary Session 2 Session Chair: Dr. Roshni Gokhale			
	ARDS Respiratory Support Strategies Prof. Laurent Brochard			
0900 - 0930	Plenary Session 3 Session Chair: A/Prof. Jacqueline Ong			
	Future ICU: Patient Design for Optimal Recovery Dr. Lauren Sorce			
	OPENING CEREMONY Emcee: Dr. Eugene Gan			
0930 - 1020	Opening Address SICM President A/Prof. Chia Yew Woon			
	ANZICS President A/Prof. Mark Nicholls			
	Opening Address Dr. Janil Puthucherry Senior Minister of State, Ministry of Digital Development and Information & Ministry of Health			
	Performance by Voice of the Cello			
1020 - 1045	Coffee / Tea Break, Exhibition and APICS Abstract Spotlight			
	HALL 406CX, ESPLANADE HALL	HALL 406D, CHANGI HALL	HALL 405B, ORCHARD HALL	HALL 404A, SENTOSA HALL
1045 - 1215	SESSION 1 - Track 1 Unlocking Hemodynamics: From Monitoring to Therapy Session Chair: Dr. Tan Joo Hor & Dr. Ruth Chen	SESSION 1 - Track 2 Liver Failure in the Limelight Session Chair: Dr. Roshni Gokhale & Dr. Andrew Cheng	SESSION 1 - Track 3 Sepsis - Global Challenges Session Chair: Prof. John Myburgh & Dr. Andrew Li	Paediatrics SESSION 1 - Track 4 Paediatric Cardiac Critical Care Session Chair: A/Prof. Jacqueline Ong & A/Prof. Peta Alexander
1045 - 1110	Haemodynamic Monitoring - Why, Who and When? Prof. Carlos Alviar	Acute Liver Failure: State of the Art Prof. Georg Auzinger	Burden of Sepsis in Asia: Is It on the Right Track? Dr. Lowell Ling	Managing Chylothorax Dr. Georgina Brown
1110 - 1135	Haemodynamic Profiling - Pressure, Flow and the Microcirculation Prof. Simon Sin	Practical Guidance on Managing Acute Liver Failure in ICU A/Prof. Stephen Warrillow	The Longer Term Impacts of Sepsis A/Prof. Naomi Hammond	3D Printing in Congenital Heart Dr. Chen Ching Kit
1135 - 1200	Matching Therapy to Haemodynamics Prof. Anand Ambikore	Challenges & Outcomes of Liver Failure in South East Asia Dr. Chanda Kendra Ho	Megadose Sodium Acetate for Sepsis: Pathophysiological Insights from Animal Models to Clinical Translation Prof. Yugeesh Lankadeva*	Medical and Mechanical Options for Right Heart Support in Children Dr. Anuradha Menon
1200 - 1215	Panel Discussion / Q&A	Panel Discussion / Q&A	Panel Discussion / Q&A	Panel Discussion / Q&A
1215 - 1315	APICS Music and Art Fest!			
	Lunch Break, Exhibition and APICS Abstract Spotlight			
1315 - 1445	SESSION 2 - Track 1 Renal Resilience: Navigating Nephrology Challenges in the ICU Session Chair: Prof. Yalya Shehabi & Dr. Manish Kaushik	SESSION 2 - Track 2 Critical Care Nutrition: Fulfilling Recovery Session Chair: Dr. Jonathan Tan & Dr. Nhi Nguyen	SESSION 2 - Track 3 Revive and Thrive: Delivering Post-Resuscitation Care Session Chair: Dr. Andrew Cheng & Dr. Ruth Chen	Paediatrics SESSION 2 - Track 4 Challenges in the Circuit: ECMO and Anticoagulation Dilemmas Session Chair: Dr. Anuradha Menon & Dr. Georgina Brown
1315 - 1340	Delving into the Mechanisms of AKI and Discussion of Potential Therapeutic Interventions Prof. Yugeesh Lankadeva	Rethinking Current Feeding Strategies For Malnourished ICU Patients Dr. Charles Lew	Cardiac Arrest in Indonesia: Current Profile and Challenges Dr. Bambang Widiantoro	Is There an Optimal Way to Wean from ECLS A/Prof. Peta Alexander
1340 - 1405	Cardiac Surgery Associated Acute Kidney Injury Prof. Gordon Choi	The Alternative Substrates in the Critically Ill Subject Programme Dr. Zudin Puthucherry	Venous Return Physiology Applied to Post-Resuscitation Haemodynamic Care Prof. Anders Aneman	ECMO in Difficult Clinical Settings A/Prof. Hwa Jin Cho
1405 - 1430	Managing the Renal Transplant Patient in ICU Dr. Emily See	Challenges in Nutritional Support after Critical Illness A/Prof. Emma Ridley	Should We Change Our Targets in Post-Cardiac Arrest Care? Prof. Markus Skrifvars	Anticoagulation: Should We Switch to Bivalirudin A/Prof. Peta Alexander
1430 - 1445	Panel Discussion / Q&A	Panel Discussion / Q&A	Panel Discussion / Q&A	Panel Discussion / Q&A
1445 - 1515	Coffee / Tea Break, Exhibition and APICS Abstract Spotlight			
1515 - 1645	SESSION 3 - Track 1 ICU Antibiotic Forum: Optimising Treatment in an Era of Increasing Resistance Session Chair: Dr. Kerins Denny & Dr. Yanni Tan	SESSION 3 - Track 2 Latest in Trauma Management Session Chair: Prof. Markus Skrifvars & Ms. Serena Koh	SESSION 3 - Track 3 How Do WE Improve ICU Outcomes? Session Chair: Dr. Tan Hon Liang & Prof. Jorge Hidalgo	Paediatrics SESSION 3 - Track 4 Optimising the Basics in Critical Care Part I Session Chair: Dr. Beatrice Ng & A/Prof. Hwa Jin Cho
1515 - 1540	Mode of Delivery and Duration of Antibiotic Treatment Prof. Jan De Waele	Airway Management after Trauma Dr. Louis Ng	1515 - 1535 Mortality Reduction in Mongolia Through Critical Care Advancement Dr. Naranpurev Mendsaikhan	Haemodynamic Monitoring in PICU - Have We Improved? A/Prof. Jacqueline Ong
1540 - 1605	Selective Decontamination of Digestive Tract in the ICU: What's Next? Prof. John Myburgh	Prognostication After Spinal Cord Injury Dr. Nishal Kishinchand Primalani	1535 - 1555 Building Critical Care Capacity in a Resource Limited Setting Dr. Sabin Kairala	Oxygen Toxicity in PICU Dr. Samiran Ray
1605 - 1630	Emerging Antibiotics in an Era of Increasing Resistance Dr. David Grolman	Managing Coagulopathies in the Multitrauma Patient Dr. Vui Kian Ho	1555 - 1615 Challenges of Research with Limited Resources Prof. Madiha Hashmi	Implementing Physiotherapy in Day to Day Care Ms. Alexandra Ferguson
			1615 - 1635 How We Manage Fluids in the ICU Prof. Nor'azim Bin Mohd Yunus	
1630 - 1645	Panel Discussion / Q&A	Panel Discussion / Q&A	1635 - 1645 Panel Discussion / Q&A	Panel Discussion / Q&A
1645 - 1715	Evening Plenary 1 Session Chair: Dr. Emily See			
	Health Economics in Critical Care Research Dr. Lisa Higgins			
1715 - 1745	Evening Plenary 2 Session Chair: A/Prof. Chia Yew Woon			
	Invasive vs Non-Invasive Assessment of Cardiogenic Shock: Can Less Be More? Prof. Carlos Alviar			

* This programme structure serves as a general guide and is subject to change.

* This programme is updated as of 9 August 2024

PROGRAMME

17 AUGUST 2024, SATURDAY (DAY 1)

Time	HALL 404A, MEETING ROOM 1	HALL 404A, MEETING ROOM 2	HALL 404A, MEETING ROOM 3
	SESSION 1 - Track 5	SESSION 1 - Track 6	SESSION 1 - Track 7
1045 - 1215	APICS Critical Care Societies Leaders Summit 2024 Session Chair: Dr. David Ku & Dr. Jolin Wang Open to All Delegates		1100 - 1230 APICS SHARE Session Nursing Moderator: Ms. Joanne Chong & Ms. Lin Xin Ling
1215 - 1315	Lunch Break, Exhibition and APICS Abstract Spotlight		
	SESSION 2 - Track 5	SESSION 2 - Track 6	SESSION 2 - Track 7
1315 - 1445	APICS Critical Care Societies Leaders Summit 2024 Session Chair: Dr. David Ku & Dr. Jolin Wang Open to All Delegates	1230 - 1445 APICS Crisis Management Simulation Basic Level Workshop for PGY-1 and Nurses Pre-registration Required	1230 - 1445 APICS Crisis Management Simulation Basic Level Workshop for PGY-1 and Nurses (Debrief Room) Pre-registration Required
1445 - 1515	Coffee / Tea Break, Exhibition and APICS Abstract Spotlight		
	SESSION 3 - Track 5	SESSION 3 - Track 6	SESSION 3 - Track 7
1515 - 1645	SICM-CSCCM Exchange Forum Session Chair: Dr. Ye Madang and Prof. Pan Chun		
	1500 - 1515 Opening Address Dr. Chen Dechang, Ruijin Hospital, Shanghai Jiao Tong University School of Medicine, Shanghai, China Dr. Yew Woon Chia, Tan Tock Seng Hospital, National Healthcare Group, Singapore		
	1515 - 1530 EIT PEEP Titration in ARDS Dr. Yun Long, Peking Union Medical College Hospital, Beijing, China		
	1530 - 1545 Lung Protective Strategy in ARDS with ECMO Prof. Chun Pan, Sichuan Academy of Medical Sciences, Sichuan Provincial People's Hospital, Sichuan, China		
	1545 - 1600 Big data and AI in Critically Patients Dr. Sheng Zhang, Ruijin Hospital, Shanghai Jiao Tong University School of Medicine, Shanghai, China		
	1600 - 1615 Guideline Based Recommendations to Improve In-Hospital Cardiac Arrest Outcomes - Singapore Experience Dr. Carrie Leong, Singapore General Hospital, Singapore		
	1615 - 1630 Withholding and Withdrawal of Life Sustaining Treatments in ICU Dr. Clare Fong, Alexandra Hospital, Singapore	1500 - 1630 APICS SHARE Session Respiratory Therapy Moderator: Ms. Faridah	1500 - 1700 APICS SHARE Session Dieticians Moderator: Dr. Charles Lew
	1630 - 1645 Panel Discussion / Q&A		

* This programme structure serves as a general guide and is subject to change.

* This programme is updated as of 9 August 2024

PROGRAMME

18 AUGUST 2024, SUNDAY (DAY 2)

APICS 2024 Pacemakers				
Time	HALL 406CX, ESPLANADE HALL	HALL 406D, CHANGI HALL	HALL 405B, ORCHARD HALL	HALL 404A, SENTOSA HALL
	SESSION 1 - Track 1	SESSION 1 - Track 2	SESSION 1 - Track 3	Paediatrics SESSION 1 - Track 4
0910 - 1040	Tailoring Mechanical Ventilation to Meet Patient Needs Session Chair: Dr. Tan Yi Hern & Prof. Gordon Choi	Extracorporeal Life Support Session Chair: Prof. Carlos Alviar & Dr. Ramanathan Ramaswamy	How Do WE Improve ICU Outcomes? Session Chair: Prof. Jan De Waele & Dr. Lau Yie Hui	APICS Top Abstract Presentations Session Chair: Dr. Emily See & Dr. Roshni Gokhale
0910 - 0935	How I Optimise Ventilatory Management in ARDS Prof. Pradip Kumar Bhattacharya	Extracorporeal Membrane Oxygenation (ECMO) in ARDS: State of the Art Prof. Georg Auzinger	0910 - 0930 How Do I Manage Sepsis in Our ICU locally Dr. Fatema Ahmed	
0935 - 1000	Strategies to Manage Insufficient or Excessive Effort Prof. Laurent Brochard	ECMO in ARDS: What Did We Learn from the COVID-19 Pandemic? Prof. John Fraser	0930 - 0950 How Do I Manage the Post-Cardiac Arrest Patient in the Most Critical Early Post-Resuscitation Phase Prof. Wei Tien Chang	
1000 - 1025	Personalised Mechanical Ventilation Prof. Jorge Hidalgo	ECPR from Japan Evidence: Current Conception and Challenge for Future Prof. Kuroda Yasuhiro	0950 - 1010 Management of Anaphylaxis and Shock in Resource-Limited Settings Dr. Giabinh Nguyen	
			1010 - 1030 What's New in ARDS Dr. Maria Encarnita B. Limpin	
1025 - 1040	Panel Discussion / Q&A	Panel Discussion / Q&A	1030 - 1040 Panel Discussion / Q&A	
1040 - 1100	Coffee / Tea Break, Exhibition and APICS Abstract Spotlight			
	SESSION 2 - Track 1	SESSION 2 - Track 2	SESSION 2 - Track 3	Paediatrics SESSION 2 - Track 4
1100 - 1230	Research Collaborations Around the Globe Session Chair: Dr. Andrew Cheng & A/Prof. Naomi Hammond	Rapid Response Systems: Swift Solutions that Save the Day Session Chair: Dr. Chua Wei Ling & A/Prof. Augustine Tee	Navigating the Stormy ICU (Cr)-Seas Session Chair: Dr. Roshni Gokhale & A/Prof. Stephen Warrillow	Optimising the Basics in Critical Care Part II Session Chair: A/Prof. Lee Jan Hau & Dr. Samiran Ray
1100 - 1125	1100 - 1120 How to Run Multicentre RCTs in ANZ Prof. John Myburgh	In Hospital Sepsis and RRS Prof. Daryl Jones	Clots, CARs, and Crashes: A Snapshot into Haematology in the ICU Dr. Tertius Toy	Augmenting Protein Intake in PICU Ms. Charlotte Lin
1125 - 1150	1120 - 1140 How It's Done in Europe Prof. Jan De Waele	Wearables with Autoactivation to Action: Effortlessly Effective Ms. Rosidah Idris & Ms. Rebecca Lim	The Management of Immune-Related Myocarditis in ICU Dr. Qian Xing	Making the Case for a PICU Pharmacist Ms. Hanna Holschier
1150 - 1215	1140 - 1200 How It's Done in Asia A/Prof. Jason Phua	Development of Rapid Response Systems in South Korea Prof. Gee Young Suh	Obstetric Emergencies in ICU Dr. Nhi Nguyen	Challenging Case Discussion: Strategies for Independent Lung Ventilation in Severe Unilateral Lung Pathologies Dr. Rebekah Heng
	1200 - 1220 Critical Care Consortium: Research Collaborations During the COVID-19 Pandemic Prof. John Fraser			
1215 - 1230	1220 - 1230 Panel Discussion / Q&A	Panel Discussion / Q&A	Panel Discussion / Q&A	Panel Discussion / Q&A
1230 - 1315	APICS Music and Art Fest! Lunch Break, Exhibition and APICS Abstract Spotlight			
	SESSION 3 - Track 1	SESSION 3 - Track 2	SESSION 3 - Track 3	Paediatrics SESSION 3 - Track 4
1315 - 1445	Neurocritical Care: State of the Art Session Chair: Dr. Andrew Cheng & Dr. Jonathan Tan	Rehabilitation: Journeying From Frail to Fit Session Chair: A/Prof. Emma Ridley & Dr. Kumaresh Venkatesan	Breathing Fresh Air into Respiratory Critical Care Session Chair: Dr. Nicole Sieow & Dr. Tay Sok Boon	Complex Care Session Chair: Dr. Cheryl Lee & Dr. Jayashree Muralidharan
1315 - 1340	Emergency Neurological Management Guidelines Update Dr. Will Loh	ICU Rehabilitation and PICS Dr. Zudin Puthucherry	ICU Management of Asthma Dr. Lim Hui Fang	Cultural Aspects in Pall ICU Dr. Siti Nur Hanim Binte Buang
1340 - 1405	Neuroprognostication Guidelines Dr. Soojin Park	The Impact of Frailty on Recovery Following Critical Illness Mr. Thomas Rollinson	Is ICU the Death Knell for All ILD Patients? Dr. Andrew Li	Bereavement in NUH, PICU Ms. Sania Binte Mohamed Janid
1405 - 1430	Multimodality Monitoring in the Neuro ICU Prof. Aarti Sarwal	Frailty Rehabilitation in Intensive Care Dr. Geetha Koyambu	ICU Management of Pulmonary Hypertension / Right Heart Failure A/Prof. Sewa Duu Wen	Transitioning Paediatric Patients to Adult Intensive Care A/Prof. Stephen Warrillow & Dr. Ben Gelbart
1430 - 1445	Panel Discussion / Q&A	Panel Discussion / Q&A	Panel Discussion / Q&A	Panel Discussion / Q&A
1445 - 1530	Coffee / Tea Break, Exhibition and APICS Abstract Spotlight			
	SESSION 4 - Track 1	SESSION 4 - Track 2	SESSION 4 - Track 3	Paediatrics SESSION 4 - Track 4
1530 - 1700	Neuroprotection in Critical Illness: Safeguarding the Synapses Session Chair: Dr. Chew Mei Fang & Dr. Soojin Park	Therapeutic Drug Monitoring in Critical Illness Session Chair: Dr. David Grolman & Dr. Kerina Denny	Don't Stress! Prioritising Staff Wellness and Mental Health Session Chair: A/Prof. Devanand Anantham & A/Prof. Siou Chun	Collaborating and Crafting New Trials: Improving ICU Research Session Chair: Dr. Ben Gelbart & Dr. Kristy Fu
1530 - 1555	Heart and Brain Interactions - Tailoring Haemodynamics in Neurocritical Patients Prof. Carlos Alviar	Practical Challenges of Drug Monitoring in ICU Patients Mr. Ian Wee	Wellbeing Framework and Choosing Priorities Prof. Phua Ghee Chee	How Do We Optimise Regional Collaboration? A/Prof. Lee Jan Hau
1555 - 1620	Monitoring Cerebral Autoregulation in Critical Illness Prof. Anders Aneman	Antibiotic Dosing in Continuous Renal Replacement Therapy Prof. Gordon Choi	Enhancing Staff Wellness: Strategies for ICU Nursing Teams Ms. Norazlina Bte Shaikh Ibrahim Mattar	Designing Paediatric Platform Trials Dr. Samiran Ray
1620 - 1645	Can Sedation Really Protect the Brain in Critical Illness? Prof. Yahya Shehabi	Therapeutic Drug Monitoring: Getting it Right Prof. Jan De Waele	Finding Strength in Shared Vulnerability: Enhancing Mental Wellness and Overcoming Burnout in Intensive Care Through Reflective Spaces Clin. Asst. Prof. David Teo	Paediatrics Critical Care Top Abstracts
1645 - 1700	Panel Discussion / Q&A	Panel Discussion / Q&A	Panel Discussion / Q&A	
1700 - 1730	Evening Plenary 3 Session Chair: Dr. Roshni Gokhale The Year in Review - The Year's Critical Care Literature in 30 Minutes A/Prof. Jason Phua			

* This programme structure serves as a general guide and is subject to change.

* This programme is updated as of 9 August 2024

PROGRAMME

18 AUGUST 2024, SUNDAY (DAY 2)

Time	HALL 404A, MEETING ROOM 1	HALL 404A, MEETING ROOM 2	HALL 404A, MEETING ROOM 3
	SESSION 1 - Track 5	SESSION 1 - Track 6	SESSION 1 - Track 7
0910 - 1040	0900 - 1100 Paccman Meeting (By Invitation Only)	0930 - 1100 APICS SHARE Session Physiotherapy Moderator: Ms. Foang Jing Wen	
1040 - 1100	Coffee / Tea Break, Exhibition and APICS Abstract Spotlight		
1100 - 1230	SESSION 2 - Track 5	SESSION 2 - Track 6	SESSION 2 - Track 7
	APICS Rising Stars Session Chair: Dr. Eamon Raith & Dr. Andrew Li By Invitation Only	In - Conference Workshop Acute Dialysis for the Critically Ill Pre-registration Required	1115 - 1245 APICS SHARE Session Pharmacy Moderator: Mr. Ian Wee
1100 - 1125	Enhancing Critical Care Outcomes in Malaysia: Bridging Gaps in Intensive Care Practices A/Prof Dr Wan Fadzline Wan Muhd Shukeri		
1125 - 1150	A Study of Prevalence, Diagnosis and Prognosis of Acute on Chronic Liver Failure in Mongolia: Nationwide Study Mr Tamir Lkhagvadorj		
1150 - 1215	Enhancing Nutritional Support in Critical Care Settings: A Quantitative Survey Study on Medical Professionals' Perspectives and Practices in Nepal Dr Kumud Pyakurel		
1215 - 1230	Panel Discussion / Q&A		
1230 - 1315	1230 - 1415 Rapid Response Systems Annual General Meeting	Lunch Break, Exhibition and APICS Abstract Spotlight	
	SESSION 3 - Track 5	SESSION 3 - Track 6	SESSION 3 - Track 7
1315 - 1445		1245 - 1500 APICS Crisis Management Simulation Intermediate Level Workshop for New MOs (PGY2s and Above) Pre-registration Required	1245 - 1500 APICS Crisis Management Simulation Intermediate Level Workshop for New MOs (PGY2s and Above) (Debrief Room) Pre-registration Required
1445 - 1530	Coffee / Tea Break, Exhibition and APICS Abstract Spotlight		
	SESSION 4 - Track 5	SESSION 4 - Track 6	SESSION 4 - Track 7
1530 - 1700	SICM-CSCCM Exchange Forum Session Chair: Dr. Chen Yeow and Dr. Wang Jun	In - Conference Workshop Epicardial Pacing and Pacemaker Troubleshooting Pre-registration Required	1530 - 1630 SICM Research Grant Pitch-for-Fund Session Chair: Dr. Lau Yie Hui
1530 - 1555	1530 - 1545 Epidemiology and Treatment of CRE Dr. Jiao Liu, Ruijin Hospital, Shanghai Jiao Tong University School of Medicine, Shanghai, China		
1555 - 1620	1545 - 1600 Immunotherapy to Treat Sepsis Induced-Immunosuppression Dr. Jianfeng Wu, The First Affiliated Hospital, Sun Yat-sen University, Guangzhou, China		
	1600 - 1615 Effect of an Herbal-Based Injection on 28-Day Mortality in Patients with Sepsis Dr. Jianfeng Xie, Zhongda Hospital, School of Medicine, Southeast University, Nanjing, China		
1620 - 1645	1615 - 1630 Sepsis-related Severe Thrombocytopenia: RESCUE Trial Dr. Hui Xie, Shanghai General Hospital, Shanghai, China		
1645 - 1700	1630 - 1645 Safe Entry - An Amalgamation of Evidence Supporting Trophic Enteral Nutrition Dr. Charles Lew, Ng Teng Fong Hospital, Singapore		
1700 - 1730	1645 - 1700 Early Rehab in Neuro ICU Dr. Wong Yu Lin, Tan Tock Seng Hospital, Singapore		

* This programme structure serves as a general guide and is subject to change.

* This programme is updated as of 9 August 2024

PROGRAMME

19 AUGUST 2024, MONDAY (DAY 3)

Time				
0800 - 0830	Plenary Session 4 Session Chair: Dr. Andrew Cheng			
	Seasonal and Pandemic Influenza: What is the Threat Posed By Avian H5N1 Prof. Edward Holmes			
0830 - 0900	Plenary Session 5 Session Chair: A/Prof. Chia Yew Woon			
	From Controlled Hypothermia to Temperature Control: How Has Our Practice Changed? Prof. Markus Skrifvars			
	HALL 406CX, ESPLANADE HALL	HALL 406D, CHANGI HALL	HALL 405B, ORCHARD HALL	HALL 404A, SENTOSA HALL
0900 - 1030	SESSION 1 - Track 1	SESSION 1 - Track 2	SESSION 1 - Track 3	Paediatrics SESSION 1 - Track 4
	Artificial Intelligence: Exploring the Metaverse Session Chair: Dr. Andrew Cheng & Dr. Ruth Chen	Ventilator Weaning: Special Situations, Unique Solutions Session Chair: Prof. Georg Auzinger & Dr. Pearly Kah	Fluids and Acute Kidney Injury Session Chair: Prof. Yageesh Lankadeva & Dr. Seth Ting	Embracing Family-Centred Care Session Chair: Dr. Siti Nur Hanim Binte Buang & Dr. Lauren Sorce
0900 - 0925	0900 - 0920 AI & Machine Learning in the ICU Dr. Andrew Cheng	Weaning Patients with Chronic Lung Disease Prof. Laurent Brochard	Personalising Vasopressor Therapy to Improve Patient and Kidney Outcomes Dr. Emily See	Lived Experience of Nurses in a PICU Ms. Kate Masterton
0925 - 0950	0920 - 0940 Fundamentals of AI & Large Language Models (ChatGPT) Prof. Aarifi Sarwal	Weaning to Long Term Ventilation Dr. Maria B Mateo	6 Month Outcomes of the PLUS Study A/Prof. Naomi Hammond	Family Involved Care in LMIC Dr. Jayashree Muralidharan
0950 - 1015	0940 - 1000 Medical Imaging and AI: Cutting Edge Diagnostics and Prediction of Patient Outcomes in Critical Care A/Prof. Charlene Liew	Chronic Ventilation for the Unweanable Dr. Chan Yeow	Protein Infusions and Nephroprotection: What the Buzz is All About Prof. Yahya Shehabi	Patient Diaries Dr. Mok Yee Hui
	1000 - 1020 AI & Data Science in Neurocritical Care Dr. Soojin Park			
1015 - 1030	1020 - 1030 Panel Discussion / Q&A	Panel Discussion / Q&A	Panel Discussion / Q&A	Panel Discussion / Q&A
1030 - 1100	Coffee / Tea Break, Exhibition and APICS Abstract Spotlight			
1100 - 1230	SESSION 2 - Track 1	SESSION 2 - Track 2	SESSION 2 - Track 3	Paediatrics SESSION 2 - Track 4
	Late Breaking Clinical Trials Session Chair: Prof. Anders Aneman & Dr. Lisa Higgins	Focus on Intensive Care Training to Improve Outcomes Session Chair: Dr. Christian Karcher & Dr. Sennen Lew	Embracing Transitions: Palliation and End of Life Care Session Chair: Prof. Aarifi Sarwal & Dr. Ravi Cutlilan	Global Perspectives in Sepsis Session Chair: Dr. Mok Yee Hui & Ms. Kate Masterton
1100 - 1125	1100 - 1120 REMAP-CAP: Steroids in Non-COVID Community Acquired Pneumonia Prof. Steve Webb	Critical Care Education from Postgraduate to Undergraduate Level Prof. Wong Wai Tat	Challenges and Solutions in Establishing Goals of Care A/Prof. Ashwin Subramaniam	Phoenix Pediatric Sepsis Definition Dr. Lauren Sorce
1125 - 1150	1120 - 1140 BLING III: β -Lactam Antibiotic Infusions in Critically Ill Patients with Sepsis Prof. Jan De Waele	Critical Care Education for Doctors in China Prof. Chen Dechang	How Do I Smoothen Out End Of Life A/Prof. Sulhat Rungruanghiranya	Is Paediatric Sepsis in LMIC Different? Dr. Jayashree Muralidharan
1150 - 1215	1140 - 1155 Prolonged vs Intermittent Infusions of β -Lactam Antibiotics in Sepsis & Septic Shock (SRMA) A/Prof. Naomi Hammond	Evolution of Intensive Care Training in ANZ Dr. Nhi Nguyen	Local Insights into End of Life and Palliation in ICU Dr. Tan Chee Keat & Dr. Lim Huey Ying	ECMO in Sepsis - Difference Between RCH and BCH Dr. Graeme MacLaren
	1155 - 1215 REVISE: Re-evaluating the Inhibition of Stress Erosions in ICU Prof. John Myburgh			
1215 - 1230	1215 - 1230 Glycaemic Control in the ICU (IPDMA) Dr. Derick Adigbli	Panel Discussion / Q&A	Panel Discussion / Q&A	Panel Discussion / Q&A
1230 - 1320	Lunch Break			
1320 - 1350	Closing Plenary 1 Session Chair: A/Prof. Jacqueline Ong			
	Landmark Trials in Paediatric Critical Care A/Prof. Peta Alexander			
1350 - 1420	Closing Plenary 2 Session Chair: Dr. Andrew Cheng			
	30 Years of Critical Care Research Prof. John Myburgh			
1420 - 1450	Closing Plenary 3 Session Chair: Dr. Andrew Cheng			
	The Future of Critical Care Prof. Jan De Waele			
1450 - 1520	APICS 2024 Closing Ceremony			

* This programme structure serves as a general guide and is subject to change.

* This programme is updated as of 9 August 2024



PROGRAMME

19 AUGUST 2024, MONDAY (DAY 3)

Time	HALL 404A, MEETING ROOM 1	HALL 404A, MEETING ROOM 2	HALL 404A, MEETING ROOM 3
0900 - 1030	SESSION 1 - Track 5 Adults: Education Reimbursement Oral Presentation Moderator: Dr. Kerina Denny & Dr. George Zhou	SESSION 1 - Track 6	SESSION 1 - Track 7
1030 - 1100	1030 - 1110 Paediatrics: Education Reimbursement Oral Presentation	Coffee / Tea Break, Exhibition and APICS Abstract Spotlight	
1100 - 1230	SESSION 2 - Track 5 1110 - 1230 Adults: Education Reimbursement Oral Presentation Moderator: Dr. Carys Jones & Dr. Seth Ting	SESSION 2 - Track 6	SESSION 2 - Track 7
1230 - 1320	Lunch Break		

* This programme structure serves as a general guide and is subject to change.
 * This programme is updated as of 9 August 2024



SHARE SESSIONS

We invite our Nursing, Respiratory Therapists, Physiotherapists, Pharmacists involved/interested in the field of Intensive Care Medicine to join us at our APICS SHARE sessions.

For each group, the session will promote interactions among the ICU nursing community and opportunity to share research and collaborative ideas.

During these 90minutes, our various groups will be able to

1. Share their accepted APICS 2024 abstracts to all + Discussions around this theme
2. Share projects in different institutions (Singapore, overseas)
3. Discuss ideas/collaborations
4. Network with local or overseas colleagues and meet renowned researchers in the field

SHARE SESSION – NURSING

17 AUGUST 2024, SATURDAY

Time	Programme	Presenter(s)
1100 – 1105hrs	Introduction to the APICS SHARE session	Ms. Lim Xin Ling APN, NTFGH Ms. Joanne Chong APN, SGH
1106 – 1118hrs	Abstract Sharing 1: APICS1153 Impact of Revised Criteria for Intensive Care Liaison program (ICAP) on Efficiency and Patient Safety	Ms. Zhao Yu Jing
1119 – 1131hrs	Abstract Sharing 2: APICS1149 Nurse-Led Structured Bowel Management Protocol for Patients in the Medical Intensive Care Unit and High Dependency Unit: A Best Practice Implementation Project	Ms. Jane Lai
1132 – 1144hrs	Abstract Sharing 3: APICS1020 Enhancing Preparedness: The SAFEST Approach to Nurturing Readiness through Simulation Training for High- Level Isolation Unit Nurses at NCID	Ms. Lim Voon Ping
1145 – 1157hrs	Abstract Sharing 4: APICS1158 Effectiveness of Hybrid Induction Program to Improve Knowledge, Skills, Satisfaction and Self-Confidence Among New ICU Nurses.	Ms. Cicely Khoo
1158 – 1210hrs	Abstract Sharing 5: APICS1295 The effectiveness of a Multimodal Sepsis Training Program on Emergency Department Nurses Knowledge and Confidence on Sepsis Care: A Mixed-Methods Study.	Dr. Chua Wei Ling
1211 – 1223hrs	Abstract Sharing 6: APICS1249 Guardians of Recovery: Nurse-Led Strategies Against Surgical Site Infections in Post-Cardiac Surgery Patients	Ms. Naveen Vadsaria
1230hrs	Closing	

SHARE SESSION – RESPIRATORY THERAPY

17 AUGUST 2024, SATURDAY

Time	Programme	Presenter(s)
1500 – 1505hrs	Introduction to APICS Share Session	Ms. Faridah Hanim S. ART(S) President
	APICS RT Sharing Abstract 1: Enhancing Airway Management During Patient Transport	Mr. Michael Vidanes
	APICS RT Sharing Abstract 2: Examining the ROX Index for Predicting HFNC Trial Outcome in Acute Hypoxemic Respiratory Failure versus MICU in a Tertiary Hospital in the East of Singapore	Ms. Jamie Ni Chen Mao
1505 – 1545hrs	APICS RT Sharing Abstract 3: Enhancing Patient Safety Cost Efficiency in ABG Sample Management: A Quality Improvement Initiative	Ms. Michelle Encarnacion
	APICS RT Sharing Abstract 4: Analysing Cost and Time Savings Through the Use of Non-Invasive Ventilation Mode on Invasive Ventilators Post-Extubation	Mr. Muhd Zikry
1545 – 1610hrs	APICS RT Sharing Abstract 5: Using Machine Learning (ML) Model to Predict ICU Readmission within 48 hours	Mr. Dan Ong
1610 – 1630hrs	New Study Discussion: Can HVT Nasal Cannulas replace Mask NIV in Hypercapnic Patients?	Mr. Mark Payne Ms. Vivienne Hu
	Hands – On Exploration Sessions <ul style="list-style-type: none"> - Non-Invasive Ventilation - Massive Haemoptysis Intubation Management - High Velocity Therapy 	Ms. Vivienne Hu Ms. Kelly Ha



SHARE SESSION – DIETICIANS

17 AUGUST 2024, SATURDAY

Time	Programme	Presenter(s)
1530 – 1535hrs	Introduction	Dr Charles Lew
1535 – 1545hrs	How to safely initiate enteral feeding in critically ill patients - an amalgamation of evidence	Ms Whye Chung Ma
1545 – 1555hrs	APICS1292 Association between energy delivery and outcomes in adult critically ill patients diagnosed with or at-risk of malnutrition: a systematic review and meta-analysis	Ms Yingxiao Huang
1555 – 1605hrs	APICS1013 Impact of peptide nutrition in ICU high risk patients: multicenter trial outcomes	A/Prof Rungsun Bhurayanontachai
1605 – 1615hrs	Enteral feeding protocol to maximize nutrition delivery in the SICU	Dr Kumaresh Venkatesan
1615 – 1625hrs	Managing the Class 3 Obesity Patient in the ICU: Practice Considerations in Reality vs Literature	Dr Alvin Wong
1625 – 1635hrs	Nutrition practice across Singaporean ICUs (NASI)	Ms Shu Han Chong
1635 – 1645hrs	Nutrition and functional status of survivors of critical illness - a protocol	Mr Ernest Kok Wah Wong
1645 – 1700hrs	Q&A + Panel discussion	Dr Charles Lew Dr Andrew Li

SHARE SESSION – PHARMACY

18 AUGUST 2024, SUNDAY

Time	Programme	Presenter(s)
1115 – 1130hrs	APICS1182 – Usability of a web-based total parenteral nutrition calculator	Ms Lim Yi Jing
1130 – 1145hrs	APICS 1188 – Determine outcomes of continuous sedation among mechanically ventilated adult patients in the ICU of a tertiary hospital in the Philippines	Dr Fatima Hayranie Guro
1145 – 1200hrs	Late-breaking journal review – SCCM & ASHP guideline for the prevention of stress-related gastrointestinal bleeding in critically ill patients	
1200 – 1230hrs	Late-breaking journal review - Prolonged/continuous vs intermittent infusions of beta-lactam antibiotics in patients with sepsis	
1230 – 1245hrs	Institutional updates	

SHARE SESSION – PHYSIOTHERAPY

18 AUGUST 2024, SUNDAY

Time	Programme	Presenter(s)
0930 – 0935hrs	Introduction	Ms Lim Yi Jing
0935 – 0945hrs	APICS1175 Automating Muscle Ultrasound Analysis within the Critical Care Setting through Artificial Intelligence Powered Software (MyoVision-US)	Dr Fatima Hayranie Guro
0945 – 0955hrs	Sharing: ICU rehabilitation	
0955 – 1005hrs	Sharing: Early mobilisation in ICU and barriers in the local context	
1005 – 1015hrs	Sharing: Research and Updates in Clinical Practice	
1015 – 1025hrs	APICS1145: Rehabilitation outcomes in patients who survived critical illness, from Intensive Care Unit (ICU) to hospital discharge.	
1025 – 1035hrs	Feasibility of Combining Functional Mobilization with Resistance and Endurance Training for Mechanically Ventilated Patients in ICU Setting – A Pilot Study	
1035 – 1045hrs	Physiotherapy Quality Improvement Projects in Intensive Care	
1045 – 1055hrs	APICS1028: Safety of early mobilisation in patients post-cardiac surgery actively supported with vasoactive medications: a service evaluation	
1055 – 1100hrs	Closing	

APICS 2025

ASIA PACIFIC
INTENSIVE CARE
SYMPOSIUM
SICM X ANZICS

SINGAPORE

22 - 24 AUGUST 2025

SUNTEC SINGAPORE CONVENTION & EXHIBITION CENTRE



SCAN TO STAY UPDATED



Organised by:

Managed by:



www.sg-apics.com

RAM 2024

REGIONAL AIRWAY MEETING

27-29 September 2024 (Friday - Sunday)
Borneo Convention Centre Kuching Sarawak, Malaysia

An Asia-Pacific Conference on Multidisciplinary Airway Management



SCAN TO STAY UPDATED



Joint Organisation of:

Managed By:



www.regionalairwaymeeting.com

10 ASEAPS 2025

10th Association of Southeast Asian Pain Societies Congress

2 - 4 MAY 2025 | SINGAPORE EXPO

30 APR – 1 MAY 2025 | PRE-CONGRESS WORKSHOPS

From Pain to **EMPOWERMENT**



SCAN TO STAY UPDATED

Organised By



The Pain Association of Singapore
A Chapter of IASP

Managed By



Supported by



Held in



www.aseaps2025.org

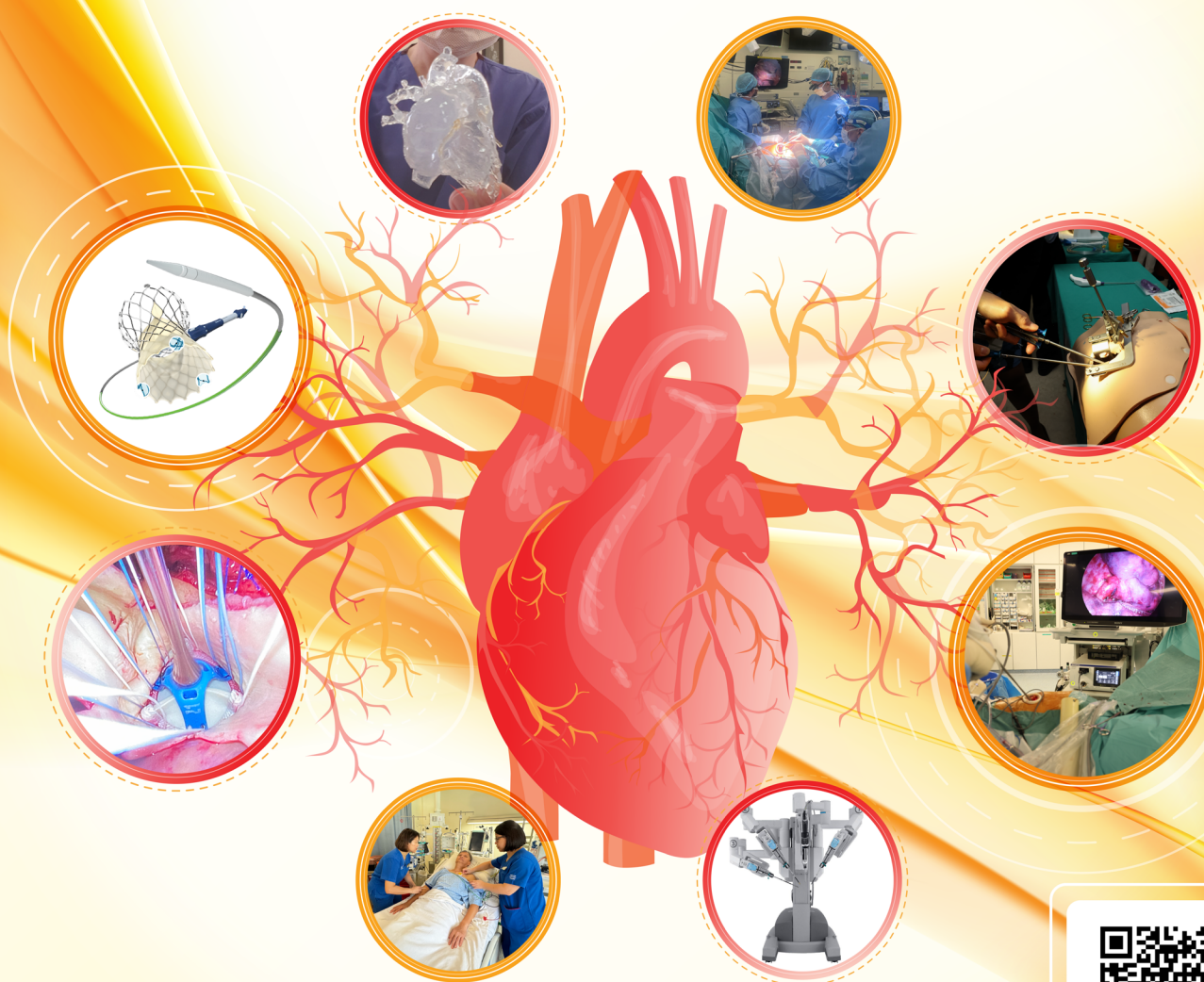
Photo credit: Ivan Ong@iophotoastro

SINGAPORE ASCVTS 2025

The 33rd Annual Meeting of the Asian Society
for Cardiovascular and Thoracic Surgery

14 – 17 May 2025
Suntec Singapore Convention & Exhibition Centre

Progress, Innovation, Fellowship



Organised By:



In Collaboration With:



Organised by the Department of Cardiac,
Thoracic and Vascular Surgery (CTVS)

Managed By:



Supported by:



Held In:



SCAN TO
STAY UPDATED

www.ascvts2025.org

APSS ROBAC 2025

Anaesthesia Patient
Safety Symposium
combined with
Regional Obesity &
Bariatric Anaesthesia
Conference 2025

An Asia-Pacific Conference

20 - 22 JUNE 2025 (FRIDAY- SUNDAY)
PULLMAN KUCHING, SARAWAK, MALAYSIA



SCAN TO
STAY UPDATED



Highlights of Concurrent Tracks

Patient Safety and Quality in Perioperative Neurosciences
Advances in Bariatric Anaesthesia, Obesity & Sleep Apnoea

JOINTLY ORGANISED BY



MANAGED BY



WWW.APSSREGIONAL.COM



Celebrating SingSPEN's
10th anniversary



PENSA

2025

Parenteral and Enteral
Nutrition Society of Asia

25TH ANNIVERSARY

7 - 11 Oct 2025 • Suntec Singapore Convention & Exhibition Centre

Strengthening Impactful Nutrition Globally through
Science, Practice, Education and Networking



Organised By



Managed By



Supported by



Held in



SCAN TO
STAY UPDATED

www.pensa2025.com



InSiGHT

www.insight2026.org

11th Biennial Meeting of the International Society for
Gastrointestinal Hereditary Tumours

4 - 7 March 2026 | Singapore



Scan To Stay Updated



Organised By:



Managed By:



Supported by:

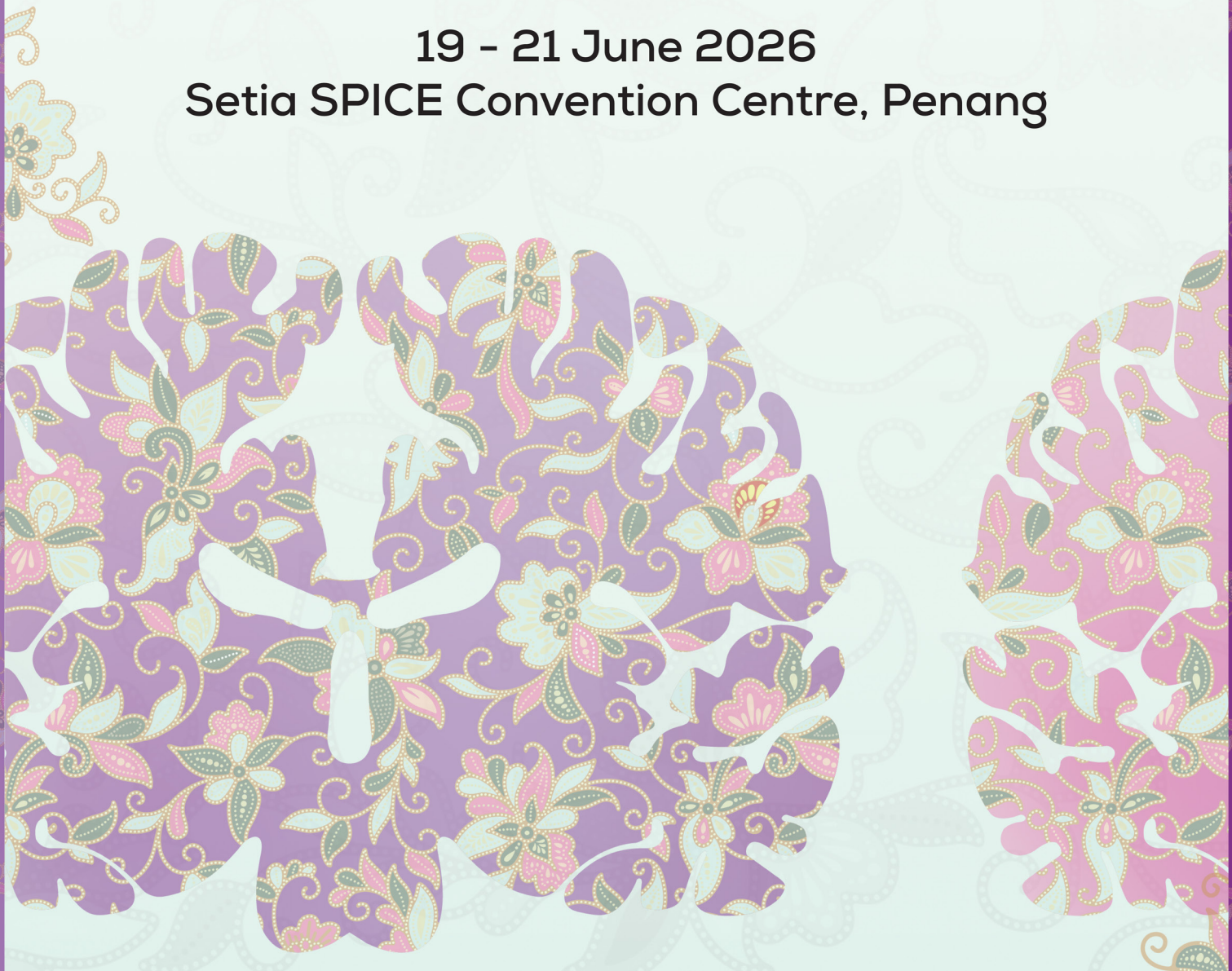


Held In:



ASIA PACIFIC NEUROCRITICAL CARE CONFERENCE 2026

19 - 21 June 2026
Setia SPICE Convention Centre, Penang



Scan To
Stay Updated

Organised by



Managed by



www.neuro-criticalcare.org